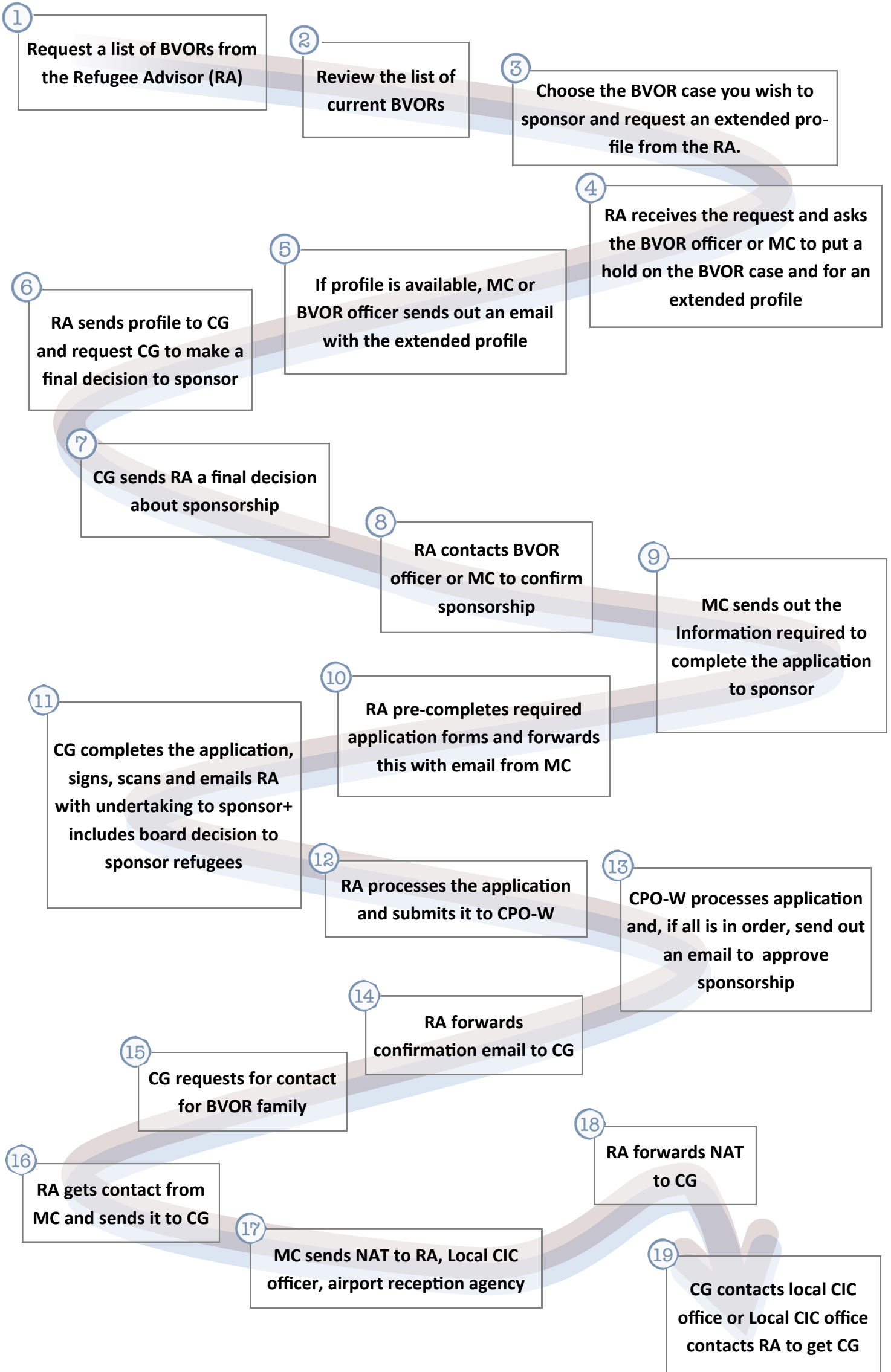


# A Step-by-step Process to BVOR Refugee Sponsorship



## Abbreviations and Glossary of Terms

**BVOR – Blended Visa Office Referred:** a program designed to resettle Visa Office-Referred refugees through a cost-sharing arrangement between CIC, SAHs and their CGs.

**CG – Constituent Group:** a group authorized by a Sponsorship Agreement Holder (SAH) to act on its behalf in sponsoring refugees. A SAH can authorize any number of Constituent Groups (CGs) to sponsor under its agreement. Each SAH sets its own criteria for recognizing CGs

**CIC – Citizenship and Immigration Canada**

**CPO-W – Centralized Processing Office Winnipeg:** a CIC office launched in April 2012 which is responsible for in-Canada processing of overseas refugee sponsorship applications

**GCMS – Global Case Management System:** CIC's single, integrated, and worldwide database system used internally to process applications for citizenship and immigration services.

**IFH – Interim Federal Health Program:** a health program established by the Government of Canada that provides temporary medical coverage for some refugees during the settlement period in Canada

**IOM – International Organization for Migration:** has the primary mandate to make arrangements for the organized transfer of foreign nationals, including refugees, displaced persons and other individuals in need of international migration services. It arranges transportation and medical examinations for refugees. The IOM provides an in-depth Canadian Orientation Abroad (COA) program on a contractual basis,

**JAS – Joint Assistance Sponsorship:** a joint undertaking by a Sponsorship Agreement Holder and one of its Constituent Groups and CIC to sponsor Government-Assisted Refugees requiring special assistance and whose admissibility depends upon this additional support to become established.

**MARS – Major Acceleration of Refugees from Syria**

**MC – Matching Centre:** the office located at CIC's National Headquarters that is responsible for brokering between CIC offices located in Canada and Visa posts overseas regarding the destining and matching to sponsors of selected refugees who have been successfully processed and are ready to travel to Canada. The MC is also responsible for the destining of some Government-Assisted Refugees as well as coordinating NAT information

**NAT – Notification (Notice) of Arrival Transmission:** advises the local CIC and Service provider organization (in the case of GARs and JAS) and sponsors (in the case of PSRs, JAS and BVORs) of the date of arrival and flight details of the refugee, and of pertinent details such as the names of sponsors, onward travel arrangements to final destinations, and special needs (e.g., wheelchair required), etc. NATs are required to maintain accurate statistics and are sent for all refugees. They include: point of origin; port of entry; date of arrival; flight details; special requirements and identification of special programs such as OYW or blended initiative.

**OYW – One Year Window Of Opportunity:** a regulatory mechanism that allows non-accompanying family members to submit an application and be eligible to be processed in the same class and category as the principal applicant (PA) for up to one year following the PA's arrival in Canada. All family members must be identified on the PA's application form.

**PA – Principal Applicant:** for a single applicant, it is that one person. For spouses, common law partners including those with children, it is the person with the strongest claim to persecution.

**POE – Port Of Entry:** legal point of entry into Canada, staffed by CBSA employees. Most POEs are at international airports, legal border crossing checkpoints with the United States and at lake and coastal seas ports

**PSR – Private Sponsorship of Refugees Program**

**RA – Refugee Advisor**

**RAP – Resettlement Assistance Program:** a contribution program established by CIC that provides basic income support and essential services for refugees who have been admitted to Canada as Government-Assisted Refugees or under the Joint-Assistance Sponsorship program

**RSTP – Refugee Sponsorship Training Program:** a program funded by CIC whose primary mandate is to provide training and information on the private sponsorship of refugees to SAHs, CGs, cosponsors, Community Sponsors and G5s. Refer to [www.rstp.ca](http://www.rstp.ca) for more information.

**SAH – Sponsorship Agreement Holder:** incorporated organizations that have signed a formal sponsorship agreement with Citizenship and Immigration Canada (CIC). Most current SAHs are religious organizations, ethno cultural groups or other humanitarian organizations. SAHs, which may be local, regional or national, assume overall responsibility for the management of sponsorships under their agreement. Organizations entering into a sponsorship

**Secondary Migration:** a refugee-initiated change in location on arrival in Canada, or during the period of the sponsorship, to a destination (city or province) other than the sponsoring community i.e. the one chosen during the selection process overseas

**Sponsorship Breakdown:** an official declaration that an irreparable failure to meet the sponsorship arrangements (care, lodging and settlement assistance) has occurred. Sponsorship breakdown is a condition of deterioration in the sponsor-refugee relationship such that the sponsor is unable or unwilling to fulfill the terms of the sponsorship undertaking. Normally, attempts are made to re-establish the sponsorship, but failing those efforts, CIC will formally declare a breakdown in the sponsorship and depending on the circumstances, the sponsoring group may be found in default.

**UNHCR – United Nations High Commissioner for Refugees**